

LOWER ASSABET & CONCORD RIVER - WINTER

SITE (Approximate address for GPS)

SUD-005 (500 Main Street, Concord) South Bridge Boat House

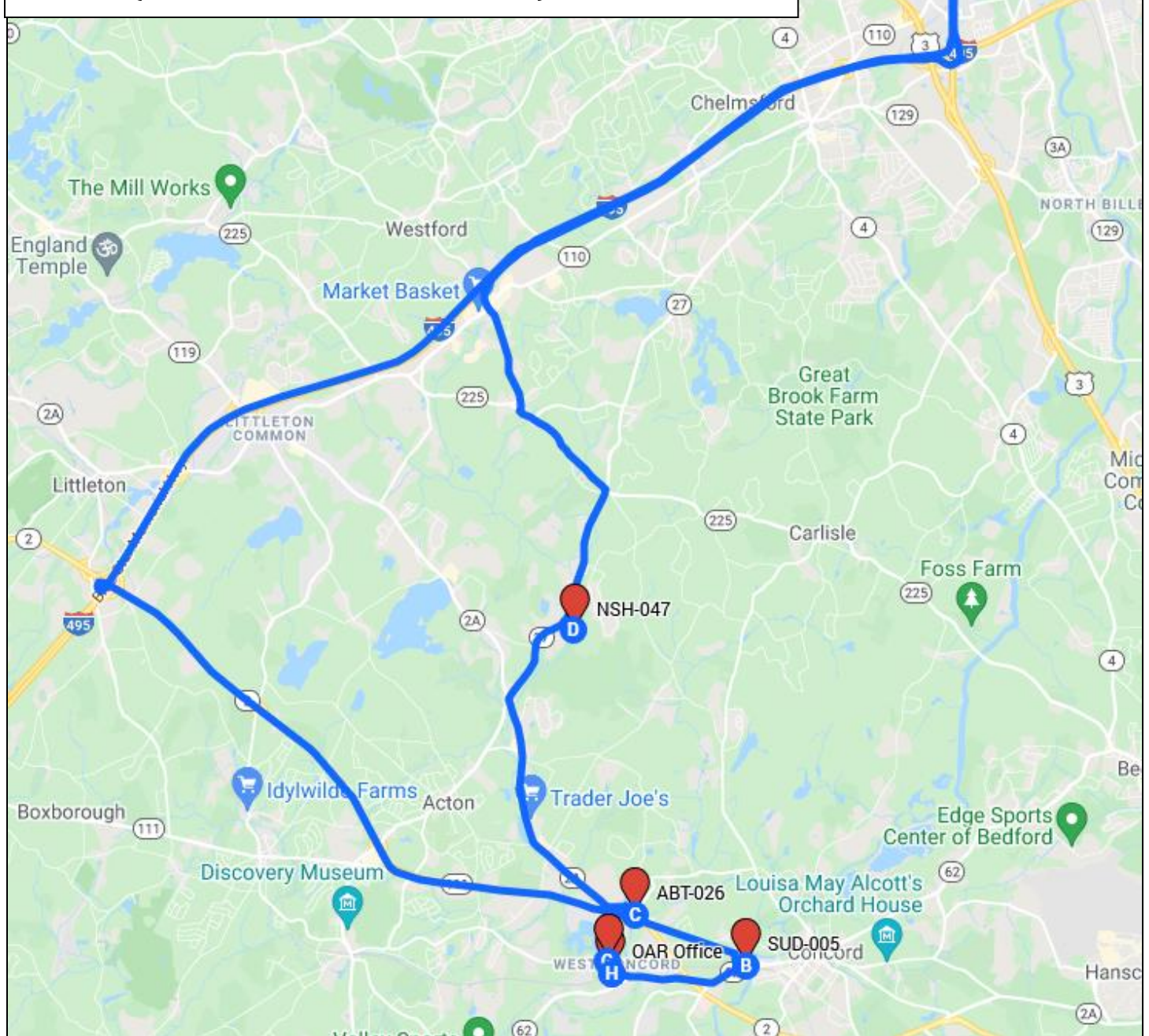
ABT-026 (29 Assabet Ave, Concord) Rt. 2

NSH-047 (75 Wheeler Lane, Acton) Nashoba Brook

RVM-005 (748 Gorham St., Lowell) River Meadow Brook

CND-009 (33 Merrill Street, Lowell) Rogers Street

NSH-002 (152 Commonwealth Ave, Concord) Nashoba Brook



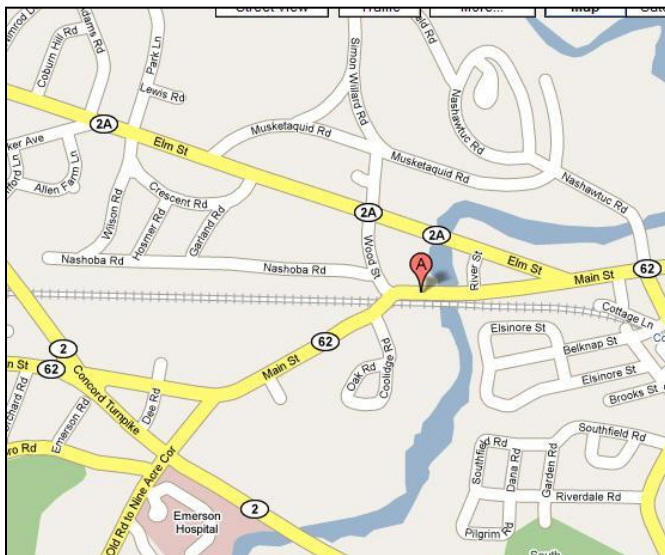
Office

OARS Office: 23 Bradford Street 3rd Floor, West Concord
From Rt. 2, take Rt. 62 west towards West Concord. At the fork (facing the 99 Restaurant), bear right onto Commonwealth Ave. Cross the railroad tracks and take a left onto Bradford Street. Turn in to the parking lot in between buildings #23 and #33 and park near the front. We use the main entrance and elevators. Our office is on the 3rd floor.



SUD-005 ROUTE 62, CONCORD

From the office, turn right on Commonwealth Ave. Merge with Main St./Rt. 62. Follow Rt 62 towards Concord center 1.4 miles. Just after you go under the stone bridge, pull into the parking lot across the street from the South Bridge Boat House. Be sure not to block the sidewalk or customer activity. You can take samples from their dock, but **if there are boat rental customers on the dock or if there is an oil slick near the dock** (often in the later summer) take the samples across the road on the upstream side of the bridge. There is a clear path to the river and an easy bank to work from. It is okay to walk around the fence and private property sign. (We do have permission from the Boat House owners to sample either on the dock or on the upstream side of the bridge; introduce yourself if there is anyone there and confirm permission.) Take YSI readings from the bridge and watch out for boaters.

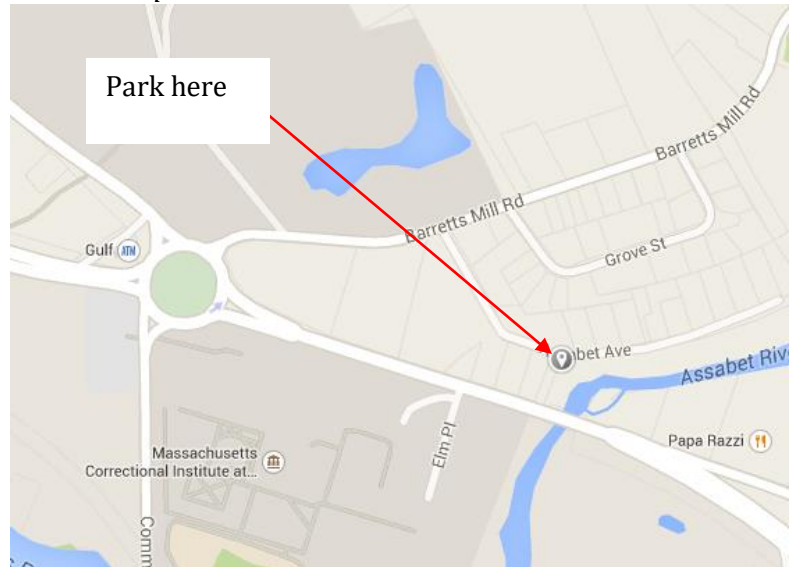


Picture angle



ABT-026 ROUTE 2, CONCORD:

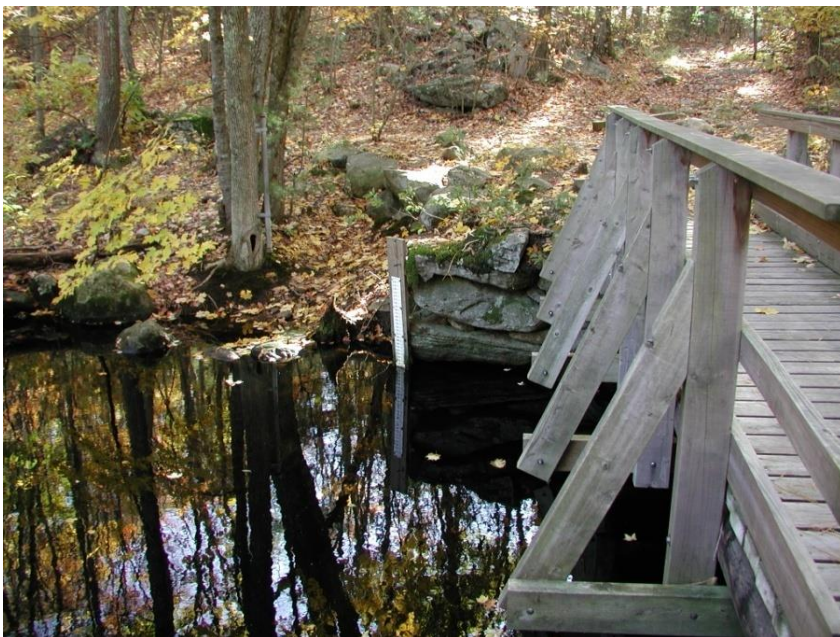
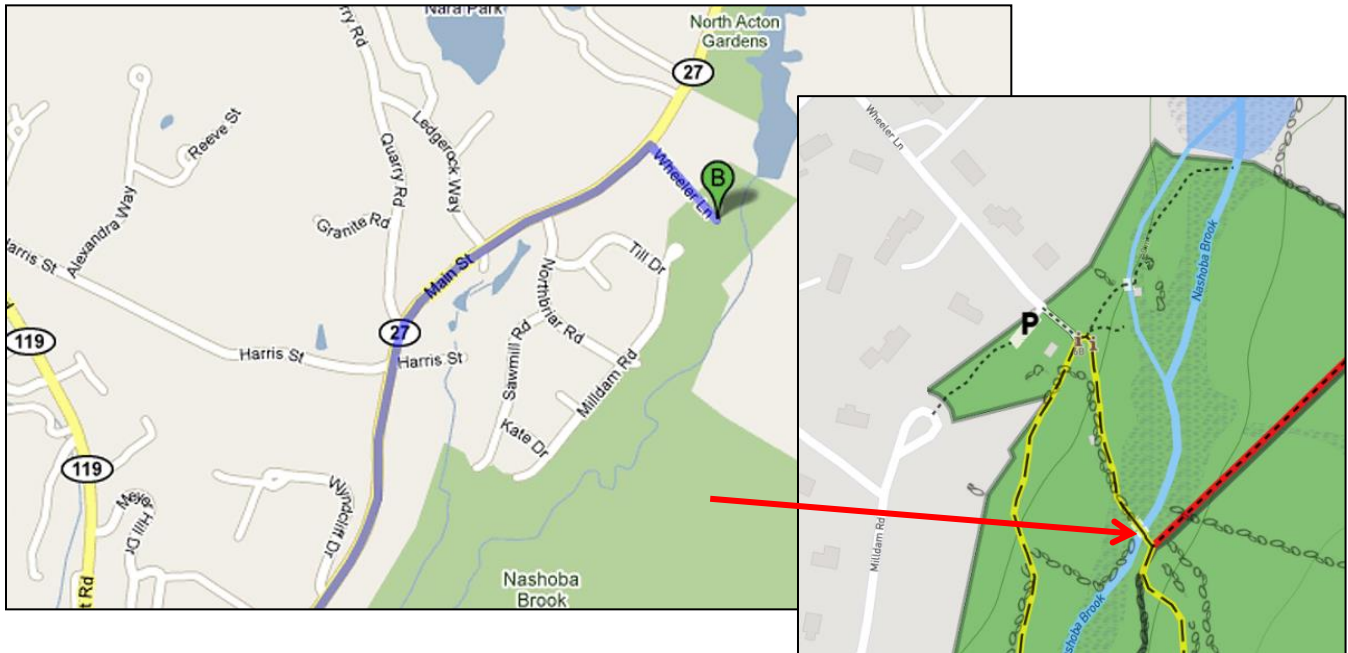
From SUD-005, Head west on MA-62 W toward Wood St. In 400 ft, Turn right onto Wood St. In 800 ft, Turn left onto Elm St. In 1.1 mi, Slight right onto MA-2 W/Concord Turnpike. In 0.4 mi, At the traffic circle, take the 1st exit onto Barretts Mill Rd. In 1,000 ft, Turn right onto Assabet Ave. In 700 ft, park by the old road. Walk out to Route 2 and the bridge. *In-situ* sampling is done from the Rte 2 bridge. For bottle sampling, climb down the embankment next to the bridge and sample from the rocks. *This site is downstream from the Concord MCI wastewater treatment plant.*



Picture angle

NSH-047 NASHOBA BROOK AT WHEELER LANE, ACTON

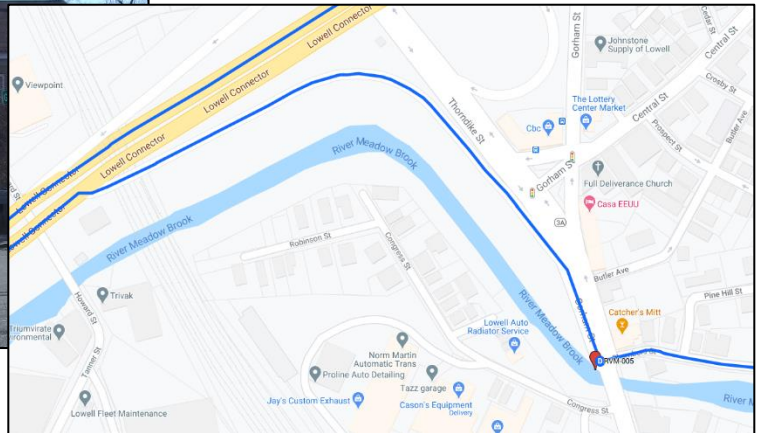
From ABT-026, return to Barrets Mill Rd and turn left to return to the traffic circle. Take the 1st exit onto MA-119 W/MA-2A W. In 2.9 mi, Turn right onto MA-27 N. In 1.1 mi, Turn right onto Wheeler Ln. and park in the lot at the end of the lane. From the parking area, there are three footpaths toward the brook. Go down the center path to the large footbridge. Sample upstream of the bridge on the left side of the stream next to the staff gage. **You do not need to read the staff gage.** It is automated.



Picture angle

RVM-005 RIVER MEADOW BROOK AT GORHAM STREET, LOWELL (READ STAFF GAGE)

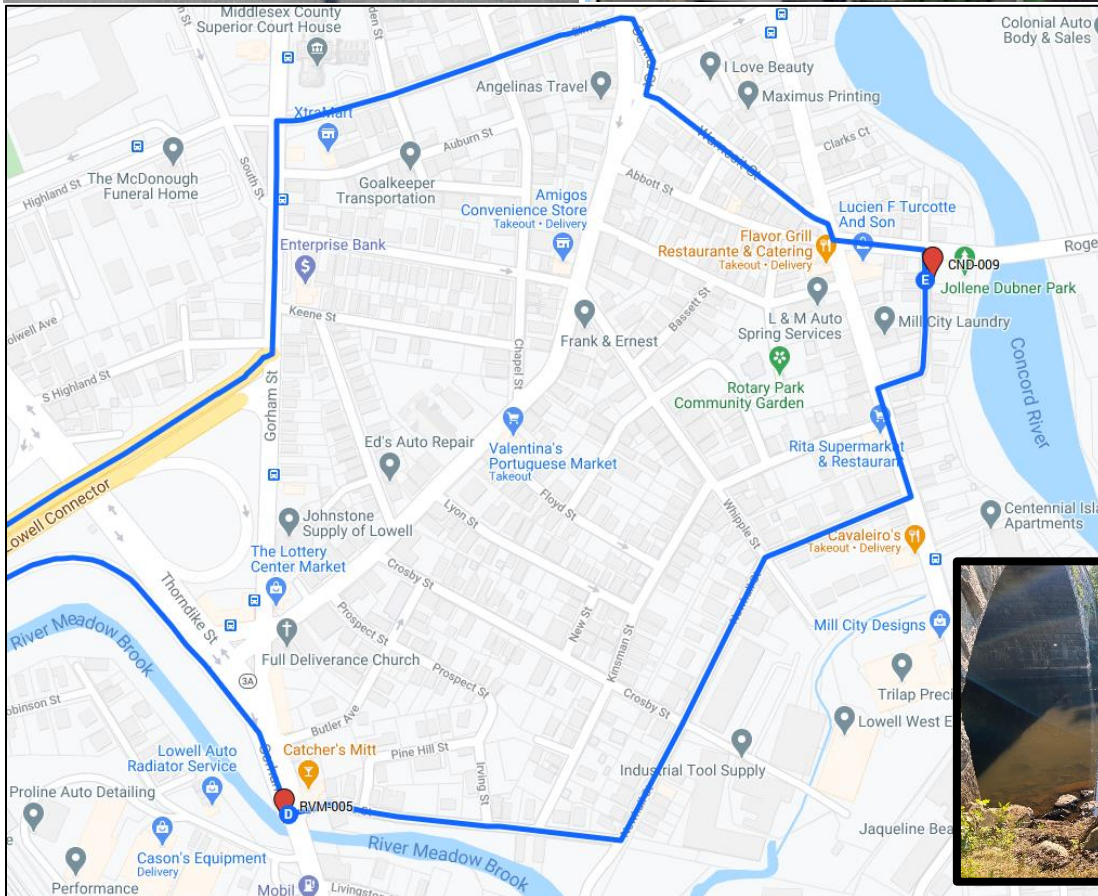
From NSH-047, Head northwest on Wheeler Ln toward MA-27 S. In 700 ft, Turn right onto MA-27 N. In 1.5 mi, Turn left onto MA-225 W. In 1.3 mi, Turn right onto Carlisle Rd. In 1.3 mi, Continue on Boston Rd. In 600 ft, Merge onto I-495 N. In 5.4 mi, Take exit 89A-B-C for US-3/Lowell Connector. Follow signs for Lowell Connector. In 2.5 mi, Take exit 5 A to MA-3A S/Gorham St. In 0.3 mi take a left onto Chambers Street just before the bridge. Park near the end of Chambers Street. Cross Gorham Street to upstream side of bridge. To collect water samples, climb over the metal guard rail and walk down the bank next to the bridge. It is best to use the pole here. Take *in-situ* meter readings from the bridge. **Be sure to read the new staff gage.**



Picture angle

CND-009 CONCORD RIVER AT ROGERS ST., LOWELL

From RVM-005, Head east on Chambers St. In 800 ft, Turn left onto Newhall St. In 800 ft, Newhall St. turns right and becomes Watson St. In 400 ft, Turn left onto Lawrence St. In 300 ft, Turn right onto Merrill St, a one-way that bends back towards Rogers Street. Park near the intersection with Rogers Street and go down to the river through the Jollene Dubner Park. Access the river either next to the Roger's St. bridge or over the side of the new walking trail. It is important to get to the moving current. You should probably use a pole for this site, unless the water is too low. For in-situ meter measurements, you can hang the sensor from the end of the pole to reach the center of flow (since the bridge is very high).

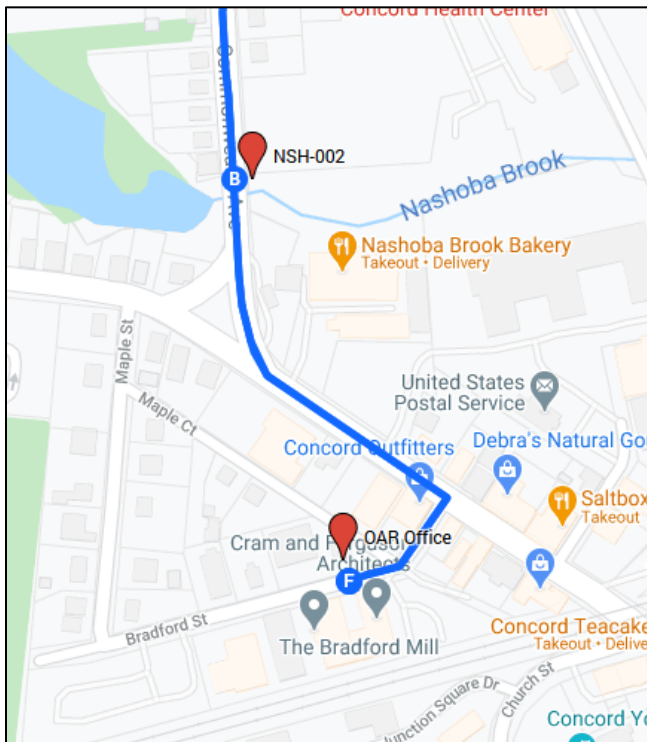


Picture angle

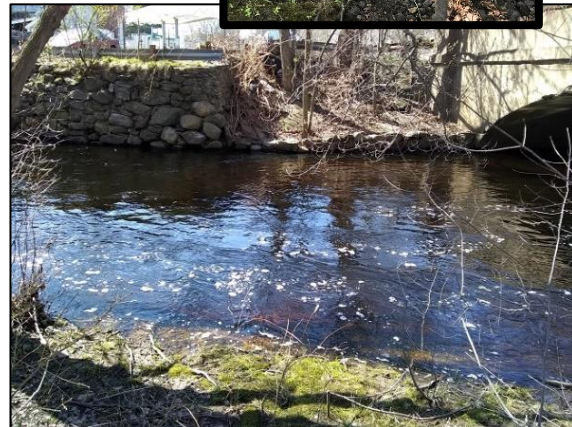
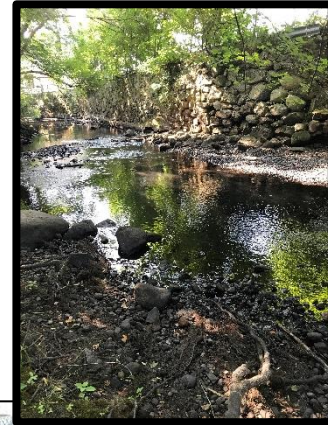


NSH-002 NASHOBA BROOK AT COMM AVE, CONCORD (READ STAFF GAGE)

From CND-009, go to the end of Merrill St and turn left onto Rogers St. In 200 ft, turn right onto Lawrence St. Immediately turn left onto Wamesit St. In 600 ft, turn right onto Central St. In 200 ft, turn left onto Elm St. In 1000 ft, turn left onto Gorham St. In 600 ft, turn right onto Lowell Connector. Take exit 2A onto Rt. 495 South. Go 11.5 miles and take Exit 29 onto Rt. 2 East. Go east 7.4 miles. At the rotary take the first spur onto Commonwealth Ave. Follow Commonwealth for 0.5 mi and park before the bridge in the gas station parking lot on the left (if the station is closed). Bottle sampling can be done on the downstream side of the bridge on the opposite side of the river from the gas station. Don't sample under the outfall beside the staff gage upstream of the bridge. *In-situ* sampling can be from the bridge. Remember to read the staff gage (see below).



Picture angle:



The staff gage is on the upstream side of the bridge. It is tricky to access, but the best approach is to climb down the stone steps next to the bridge around the outfall. Don't read the gage if it doesn't feel safe. The hydraulic control for the gage is the rocky riffle under and just downstream of the bridge; observe the control riffle from the downstream side of the bridge.



RETURN TO OARS OFFICE:

From NSH-002, continue on Commonwealth into West Concord. Stay left at the triangle intersection, and take the first right onto Bradford Street.

Do not bring the samples upstairs! Let me know you're here and we'll check in the samples in the parking lot.

